



ABOUT ENHANCED DOMAIN AWARENESS (EDA)

The EDA platform is a secure, unclassified virtual environment designed to facilitate collaboration and information sharing among USSOUTHCOM, the Department of Defense (DoD), other Combatant Commands, and international partners. EDA addresses modern security challenges by integrating over 200 different data sources, including Commercially Available Information (CAI), Publicly Available Information (PAI), and academic insights to enhance the effectiveness of partner engagements and operations.

By providing broad, persistent coverage and leveraging open-source data, EDA mitigates the limitations of traditional ISR, which often offers detailed but narrow insights with limited duration. Our platform ensures situational awareness and enables swift responses to emerging threats, strengthening security and collaboration across regions.

ARCHITECTURE TOOLS AVAILABLE

■ Azure GovCloud - Secure data integration with tools that enhance security, compliance, backup and recovery capabilities, as well as access to industry-leading AI services

- Azure Virtual Desktop (*GPU accelerator*)
- Azure AI and machine learning
- Azure Blob Storage

■ ArcGIS Enterprise - Variety of tools to process and examine imagery of all sizes, perform imagery exploitation, discover and stream geospatial video, and perform spatial analysis

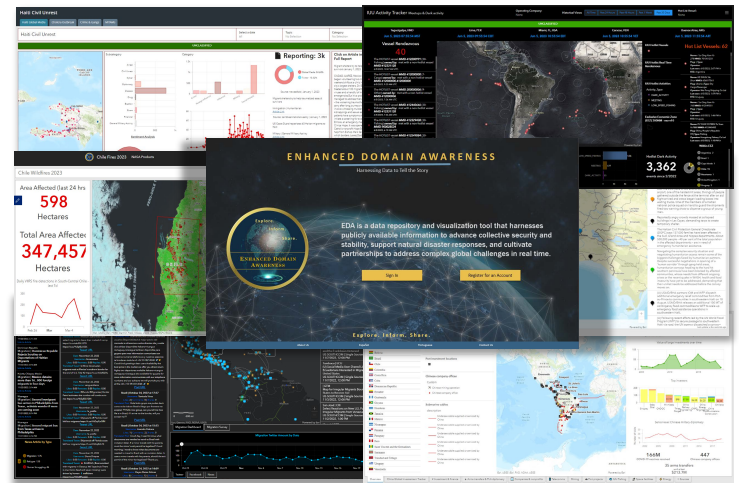
- ArcGIS Mission Server (*mobile enabled team management*)
- ArcGIS Excaliber (*imagery analysis toolkit*)
- ArcGIS Notebook Server (*python scripting environment*)
- ArcGIS Video Server (*full motion video streaming*)
- ArcGIS Image Server (*manage large imagery collections*)
- ArcGIS GeoEvent (*API connections and data mobility*)

■ Stardog - Data mesh capability that streamlines data analytics to discover unexpected insights and patterns

And many more!



Some of the architecture tools available in EDA



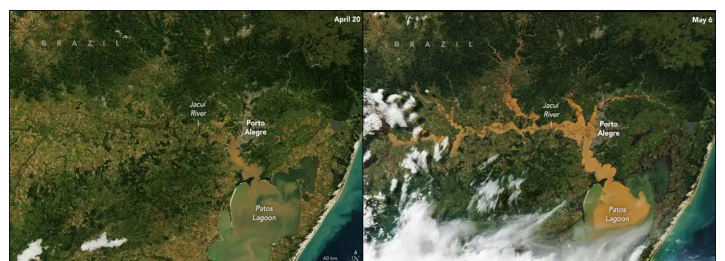
SUCCESSES

■ Illegal, Unregulated, Unreported Fishing:

- IUU Fishing: Tracking over 140 Chinese vessels conducting nefarious and illicit activities, sharing data with USG and Partner Nations. The EDA platform has been used as the central aggregator for IUUF data. International engagements serve to inform partners, who seek to contextualize how data analysis supports their efforts.

■ Humanitarian Crisis:

- Chile Wildfires (FEB 2024): Chile Joint Staff and services were able to access high resolution imagery and analytical products via EDA to complete comprehensive damage assessments during an intense fire season.
- Brazil Floods (MAR-MAY 2024): Unified disaster response from SOUTHCOM, U.S. Space Force, NASA, and Brazil CENSIPAM resulted in effective concentration of resources in most heavily impacted areas.



© NASA - earthobservatory.nasa.gov

- Porto Alegre, Brazil in April 2024 and May 2024 respectively, illustrating flooding impacts

Acronyms

CIP - Common Intelligence Picture
COP - Common Operating Picture
IUUF - Illegal, Unregulated, Unreported Fishing
USG - US Government

(As of: 30 October 2024)